

Declaration for CPX Wave system

To Whom It May Concern

Thanks for choosing DMEGC.

As for the installation requirements between the DMEGC modules and CPX Wave mounting system, DMEGC confirms that:

DMEGC standard modules are compatible with CPX mounting methods and the frame of DMEGC's modules (DM58510T-B72HSW; DM440M10RT-54HBB; DM440M10RT-B54HBT; DM495M10RT-60HBB; DM445M10RT-54HBW-V; DM500M10RT-60HBB) can meet CPX requirements:

This letter is provided as a supplement to the installation manual provided with the modules at the time of sale. DMEGC confirms that the modules (mentioned above) to be use with CPX Wave Dual ballasted racking system, as schematically shown in Figure 1, using the clamps shown in Figure 2, position is same as the mounting hole on the long frame (Excluding 400mm tracking mounting holes), do not violate the product warranty of DMEGC's modules (mentioned above), if the following maximum(test) loads are not exceeded:

-Maximum test load:

front test load 3600Pa and backside -2400 Pa

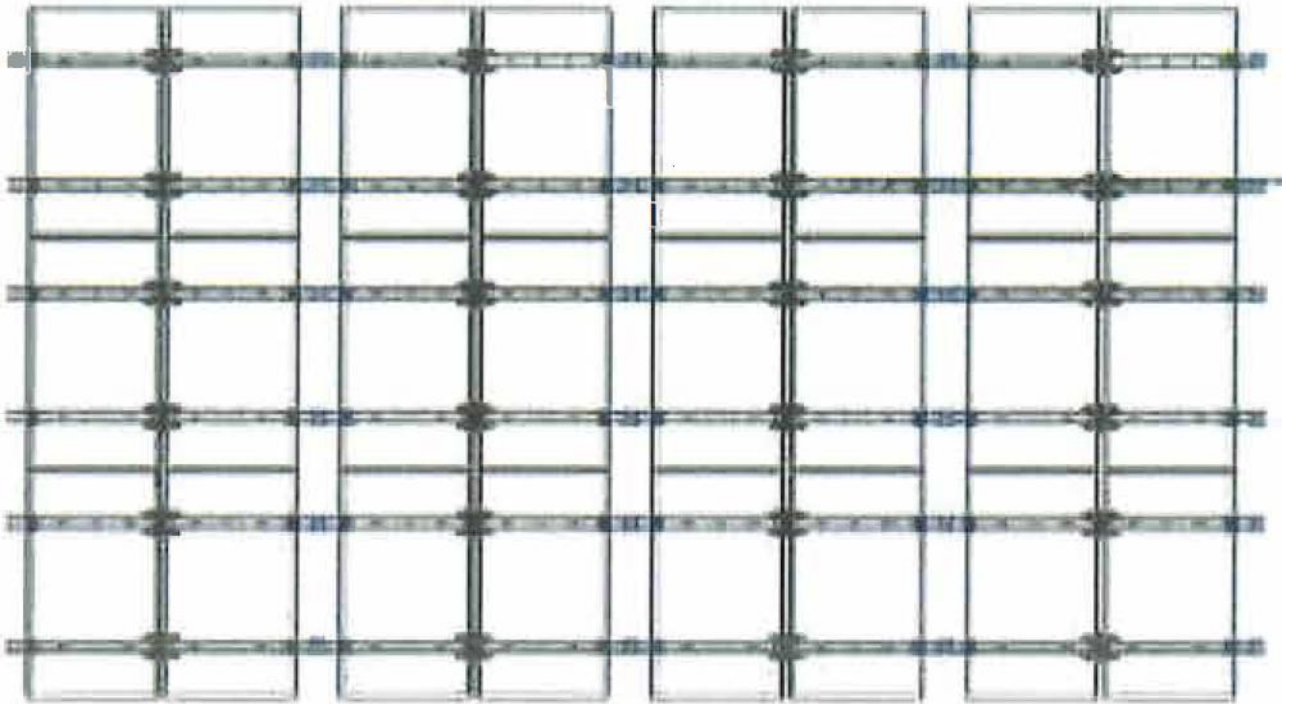


Figure 1: schematic representation of fixation

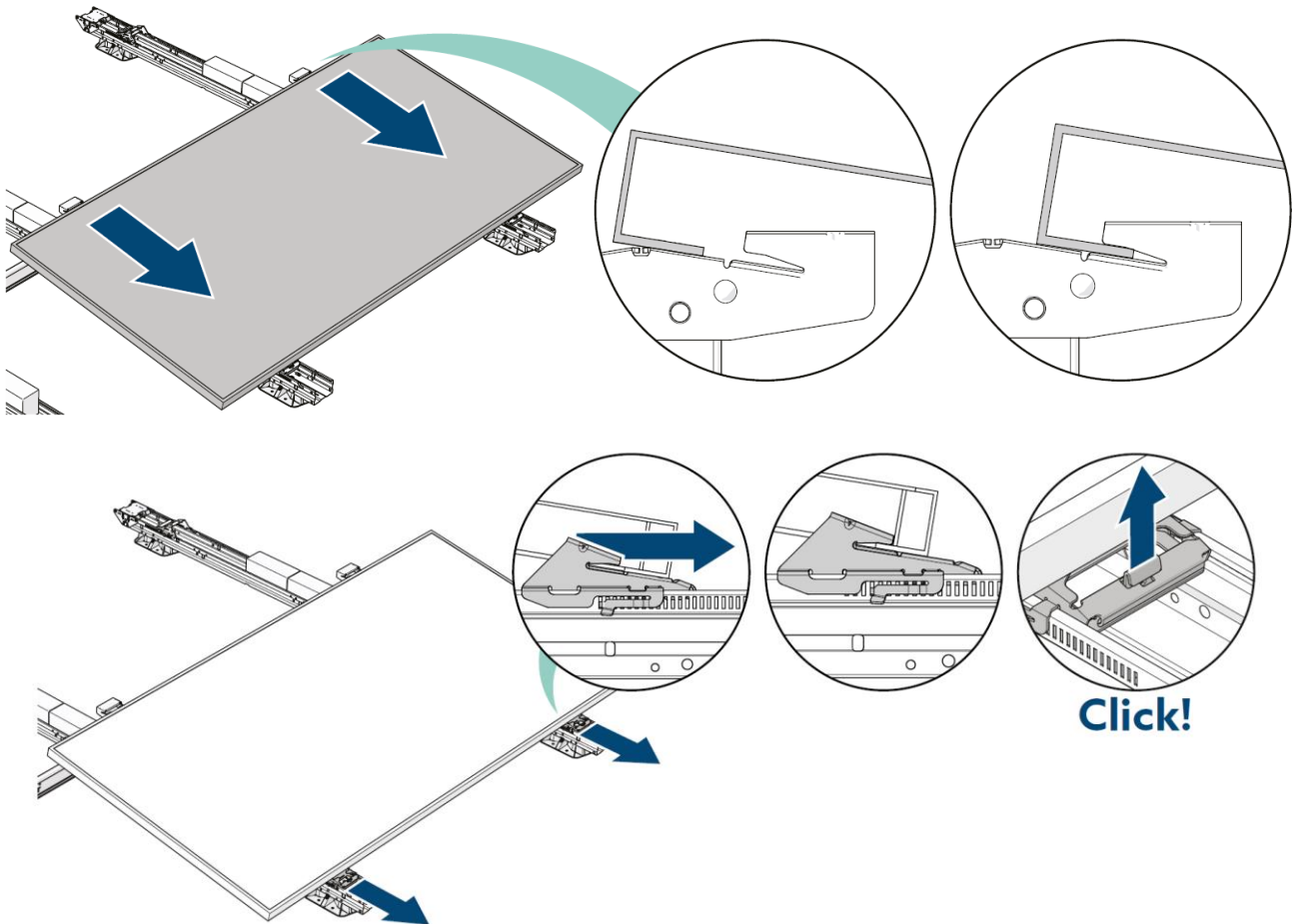


Figure 2: Clamps / Zip system

DMEGC Solar
Product Management Department
March 18, 2024

唐悦巍